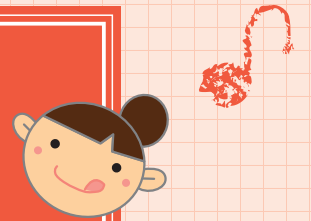


Delicious, Heart-warming Fukushima's Winter!



The item you shouldn't miss ...

Ramen Noodles!

The renowned Kitakata ramen noodles with their unique texture are among the top-ranked in Japan. Boasting a comparable popularity are the tasty Shirakawa ramen, and ramen shops which vie with each other for the ultimate in succulence and taste. A bowl of hot ramen is the perfect way to warm you up in the chill of winter.



Shirakawa ramen

[Inquiry] Shirakawa Tourism Association
Tel: +81(248)22-1147



Kitakata ramen

[Inquiry] Kitakata Tourism Association
Tel: +81(241)24-5200

Winter taste treats from the coastal area ...

Crab/Anglerfish Hotpots!

Crab hotpots truly represent the winter taste treats of the coastal cities of Iwaki and Soma. Various crabs are unloaded here, including *beni-zuwai*, *hira-gani* and *taraba-gani*. The seas off Iwaki are where warm and cold ocean currents meet, creating ideal fishing grounds. True to the reputation "anglerfish in the East and globefish in the West," the elegant taste of an anglerfish hotpot is a true gourmet delight.



Anglerfish hotpot

[Inquiry] Iwaki City Tourism & Products Association Tel: +81(246)27-2871

Crab hotpot

[Inquiry] Matsukawaura Tourist Information Center Tel: +81(244)38-7666

Yes, even in winter in Fukushima ...

Enjoy Strawberry Picking!

Strawberry picking ~ a popular family attraction.

Iwaki City: Late Dec. ~ early May

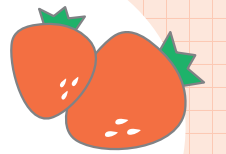
[Inquiry] Iwaki City Tourism & Products Association Tel: +81(246)27-2871

Soma City: Early Jan. ~ late May

[Inquiry] Soma City Office (Tourism & Products Sec.) Tel: +81(244)37-2155

Fukushima City: Mid-Jan. ~ late May

[Inquiry] Fukushima City Tourism & Products Association Tel: +8124-525-3722



"Oza-Toro-Tembo" Train

Feeling far free...For the travelers' sentiment!

A delightful three-car train consisting of

- a tatami-matted "Ozashiki"-style car,
- a "Torokko"-style outdoor feeling car, and
- a "Tembo" (sightseeing) car with close-to-rails viewing.

"Aizu-Roman-go" Torokko Train

*Please make note of the schedule of operation for the "Aizu-Roman-go" trains.

- "Hana (Flower)-go" (Aizu-Wakamatsu ⇄ Aizu-Tajima)
- "Kaze (Wind)-go / Shinsetsu (Fresh snow)-go" (Aizu-Tajima ⇄ Aizu-Wakamatsu)
- "Hoshi (Star)-go / Yukimi (Snow-viewing)-go" (Aizu-Wakamatsu ⇄ Aizu-Tajima)

Tickets for those who wish to ride can be reserved from one month prior to train operation.

* For other than regularly scheduled days (except days for train maintenance), the train is available for charter. Please consult us.

For information and consultation, please contact:

Aizu Tetsudo Railroad Co., Ltd.
Tel: +81 (242) 28-5885 <http://www.aizutetsudo.jp/>

Fukushima Airport Access

Limousine bus

*Bus departure schedule may vary according to flight arrival time.

Koriyama ⇄ Fukushima Airport

Fukushima Kotsu
Tel: +81(24)944-5400
Fare:
[One way] ¥1,080 for adult, ¥540 for child [2-coupon ticket]
¥2,100 for adult,
¥1,050 for child

Iwaki ⇄ Fukushima Airport

Shin-Joban Kotsu
Tel: +81(246)72-2131
Fare:
[One way] ¥2,000 for adult, ¥1,000 for child

Fukushima Airport Access

By Fukushima Airport Shared Taxi

To Fukushima Fare:[One way] ¥3,000/person	To Nikko (Kinugawa), Utsunomiya Fare:[One way] ¥5,000/person
To Shirakawa, Nishi-Shirakawa, Higashi-Shirakawa Fare:[One way] ¥2,500/person	To Nasu/Shiobara Fare:[One way] ¥4,000/person
To Iwaki, Futaba Fare:[One way] ¥3,500/person	To Kita-Ibaraki, Takahagi, Hitachi Fare:[One way] ¥5,000/person
To Aizu-Wakamatsu, Kitakata Fare:[One way] ¥3,500/person	

By reservation only
Shared taxi service is operated for 2 passengers or more.

Taxi Operation Center, Fukushima Airport Taxi Council
Tel: +81(247)26-8338
*Reservations required one day prior to use.
*Or may be available without reservation if capacity permit.
*This service runs on demand.

Fukushima Airport Access

The "Aizu-go" reservation-only bus (By reservation only)

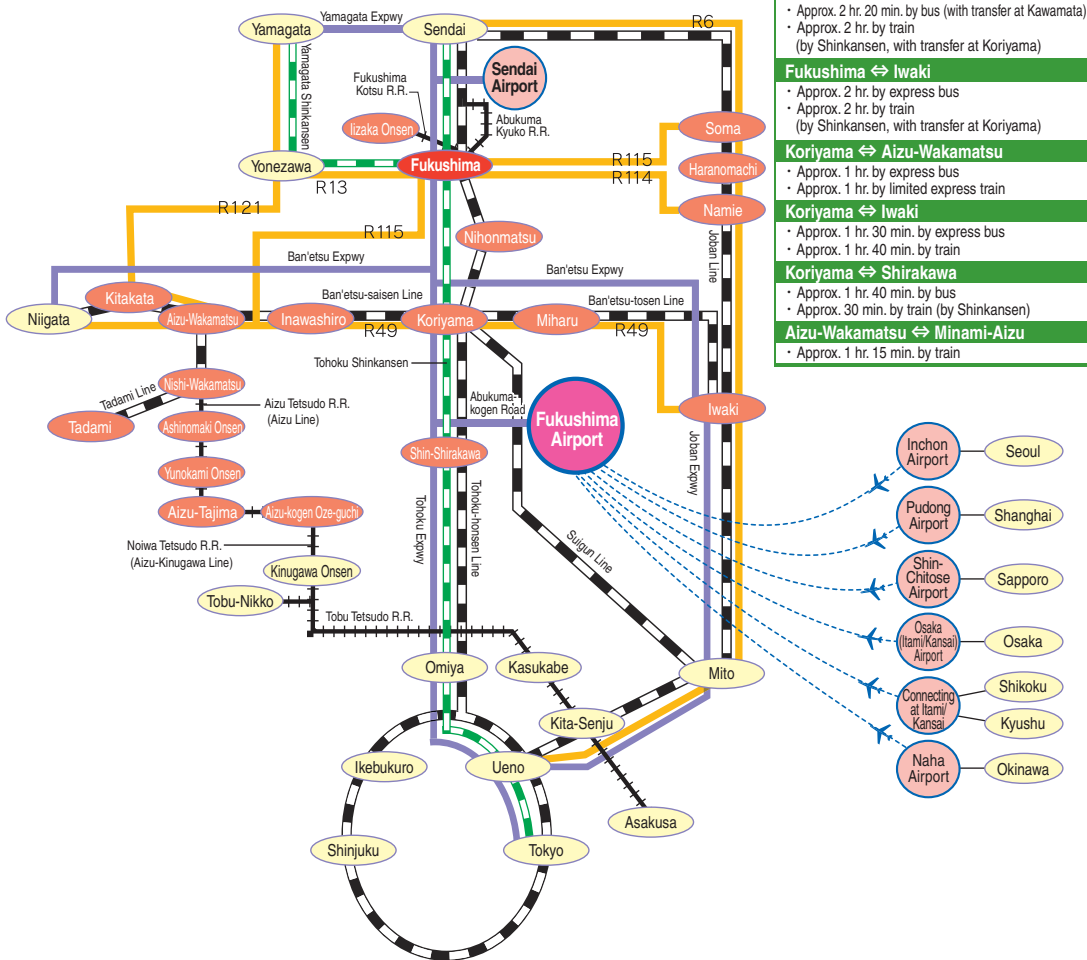
Fukushima Airport ⇄ Inawashiro, Aizu-Wakamatsu, Higashiyama Onsen

Aizu Taxi
Tel: +81(242)38-1111
Fare: [One way] ¥2,000/person

*This service is available for 5 or more passengers. 3-day prior reservations required.

Access inside Fukushima Prefecture

Fukushima ⇄ Aizu-Wakamatsu
• Approx. 1 hr. 20 min. by express bus
• Approx. 1 hr. 20 min. by train (by Shinkansen, with transfer at Koriyama)
Fukushima ⇄ Koriyama
• Approx. 1 hr. by express bus
• Approx. 20 min. by train (by Shinkansen, with transfer at Koriyama)
Fukushima ⇄ Haranomachi
• Approx. 2 hr. 20 min. by bus (with transfer at Kawamata)
• Approx. 2 hr. by train (by Shinkansen, with transfer at Koriyama)
Fukushima ⇄ Iwaki
• Approx. 2 hr. by express bus
• Approx. 2 hr. by train (by Shinkansen, with transfer at Koriyama)
Koriyama ⇄ Aizu-Wakamatsu
• Approx. 1 hr. by express bus
• Approx. 1 hr. by limited express train
Koriyama ⇄ Iwaki
• Approx. 1 hr. 30 min. by express bus
• Approx. 1 hr. 40 min. by train
Koriyama ⇄ Shirakawa
• Approx. 1 hr. 40 min. by bus
• Approx. 30 min. by train (by Shinkansen)
Aizu-Wakamatsu ⇄ Minami-Aizu
• Approx. 1 hr. 15 min. by train



TIF Tourist Information Fukushima

<http://www.tif.ne.jp>

For further information, please contact:

Fukushima Prefecture Tourism & Local Products Association
4th Floor, Fukushima-ken Jichi-kaikan Bldg., 8-2, Naka-machi, Fukushima City, Fukushima Prefecture 960-8043, Japan
Tel: +81 (24) 521-3812 Fax: +81 (24) 521-3811 E-mail: tif@tif.ne.jp

Fukushima Prefecture Tourism Promotion Division	TEL: +81(24)521-7286 FAX: +81(24)521-7888
Fukushima Prefecture Tourism & Local Products Center	TEL: +81(24)525-4031 FAX: +81(24)536-3188
Fukushima Prefecture Tourism & Local Products Association, Tokyo Tourist Information Center	TEL: +81(3)3834-5416 FAX: +81(3)3834-5417
Fukushima Prefecture Tokyo Office	TEL: +81(3)5212-9050 FAX: +81(3)5212-9195
Fukushima Prefecture Hokkaido Office	TEL: +81(11)241-8717 FAX: +81(11)241-8719
Fukushima Prefecture Nagoya Office	TEL: +81(52)251-0368 FAX: +81(52)251-6094
Fukushima Prefecture Osaka Office	TEL: +81(6)6343-1721 FAX: +81(6)6343-1727